

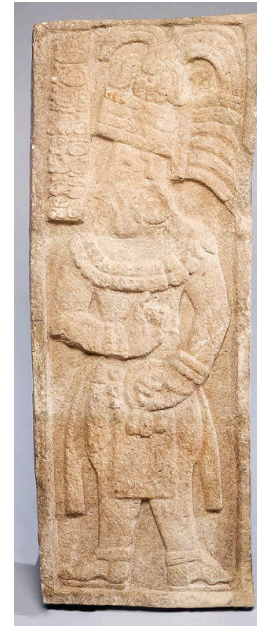
Basic Report



Title: Warrior Figure
Date: ca. 600-900
Primary Maker: Maya
(archaeological culture)
Medium: pottery



Title: Temple Figure
Date: ca. 300-900
Primary Maker: Maya
(archaeological culture)
Medium: pottery and pigment



Title: Stela with Lord
Date: ca. 600-900
Primary Maker: Maya
(archaeological culture)
Medium: limestone



Title: Reclining Male Figure
Date: ca. 300 BCE-300 CE
Primary Maker: Maya
(archaeological culture)
Medium: pottery and paint



Title: Priestess Figure
Date: ca. 550-950
Primary Maker: Maya
(archaeological culture)
Medium: pottery and pigment



Title: Portrait Head
Date: ca. 600-900
Primary Maker: Maya
(archaeological culture)
Medium: stucco and paint



Title: Mushroom Stone
Date: ca. 300 BCE-200 CE
Primary Maker: Maya
(archaeological culture)
Medium: stone



Title: Mayan Lord
Date: not dated
Primary Maker: Maya
(archaeological culture)
Medium: stucco and paint



Title: Mask of a God and Two Panel Figures
Date: ca. 400
Primary Maker: Maya
(archaeological culture)
Medium: stucco



Title: Male Figure
Date: ca. 600-900
Primary Maker: Maya
(archaeological culture)
Medium: pottery



Title: Hieroglyphic Panel Fragment
Date: ca. 700-800
Primary Maker: Maya
(archaeological culture)
Medium: limestone



Title: Head Fragment
Date: ca. 750
Primary Maker: Maya
(archaeological culture)
Medium: stucco



Title: Head Fragment
Date: ca. 600-900
Primary Maker: Maya
(archaeological culture)
Medium: jade



Title: Hacha
Date: ca. 900-1200
Primary Maker: Maya
(archaeological culture)
Medium: granite



Title: Hacha
Date: ca. 600-900
Primary Maker: Maya
(archaeological culture)
Medium: stone and cinnabar



Title: Hacha

Date: ca. 600-900

Primary Maker: Maya
(archaeological culture)

Medium: limestone and
paint



Title: Figure

Date: ca. 600-900

Primary Maker: Maya
(archaeological culture)

Medium: stone



Title: Figure

Date: ca. 700

Primary Maker: Maya
(archaeological culture)

Medium: stone



Title: Figure

Date: ca. 700

Primary Maker: Maya
(archaeological culture)

Medium: stone



Title: Figure

Date: ca. 700

Primary Maker: Maya
(archaeological culture)

Medium: stone



Title: Figure

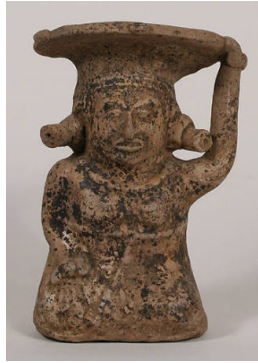
Date: ca. 600-900

Primary Maker: Maya
(archaeological culture)

Medium: jade



Title: Figure
Date: ca. 300 BCE-250 CE
Primary Maker: Maya
(archaeological culture)
Medium: basalt



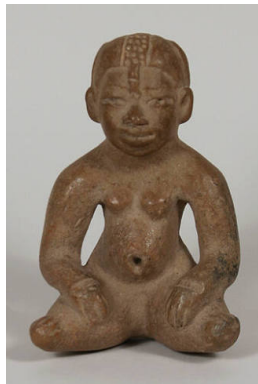
Title: Female Figure
Date: ca. 600-900
Primary Maker: Maya
(archaeological culture)
Medium: pottery



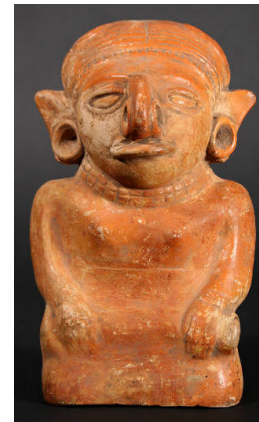
Title: Female Figure
Date: ca. 300-900
Primary Maker: Maya
(archaeological culture)
Medium: pottery and paint



Title: Female Figure
Date: ca. 300-900
Primary Maker: Maya
(archaeological culture)
Medium: pottery and paint



Title: Female Figure
Date: ca. 600-900
Primary Maker: Maya
(archaeological culture)
Medium: pottery



Title: Female Figure
Date: ca. 600-900
Primary Maker: Maya
(archaeological culture)
Medium: pottery and paint



Title: Female Figure

Date: ca. 800-400 BCE

Primary Maker: Maya
(archaeological culture)

Medium: pottery

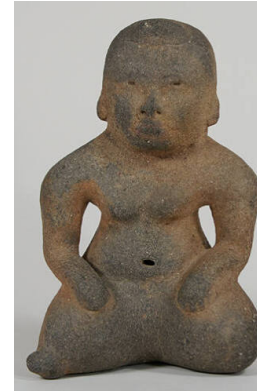


Title: Female Figure

Date: ca. 700-800

Primary Maker: Maya
(archaeological culture)

Medium: pottery and paint



Title: Female Figure

Date: ca. 1000-500 BCE

Primary Maker: Maya
(archaeological culture)

Medium: pottery



Title: Face

Date: ca. 900-1400

Primary Maker: Maya
(archaeological culture)

Medium: pottery and paint



Title: Eccentric Flint

Date: ca. 600-900

Primary Maker: Maya
(archaeological culture)

Medium: flint



Title: Eccentric Flint

Date: ca. 600-900

Primary Maker: Maya
(archaeological culture)

Medium: flint



Title: Ballgame Yoke

Date: ca. 600-900

Primary Maker: Maya
(archaeological culture)

Medium: stone and
specular hematite



Title: Ballgame Yoke

Date: ca. 300-900

Primary Maker: Maya
(archaeological culture)

Medium: stone



Title: Ballgame Palma

Date: ca. 600-900

Primary Maker: Maya
(archaeological culture)

Medium: volcanic stone