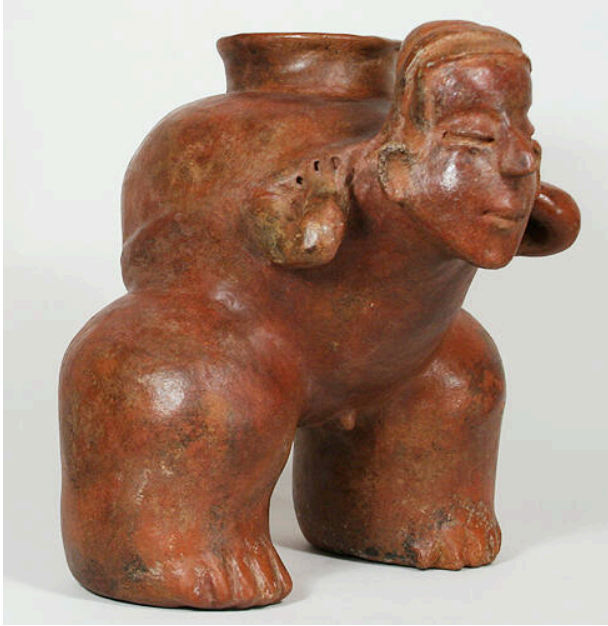


# Basic Detail Report

---



## Jar

### Date

ca. 300 BCE-300 CE

### Primary Maker

Jalisco

### Medium

pottery and paint

### Description

In West Mexico and other parts of Mesoamerica, heavy loads were carried on the back supported by tumplines passed across the forehead. This jar is in the form of a male figure carrying a water jug. The opening for the

water jug also serves as the opening for the vessel. The ropy arms, thick legs and club-like feet are a distinctive style of San Sebastian Red.

### Dimensions

Overall: 11 1/2 x 10 1/2 x 10 1/2 in. (29.2 x 26.7 x 26.7 cm)